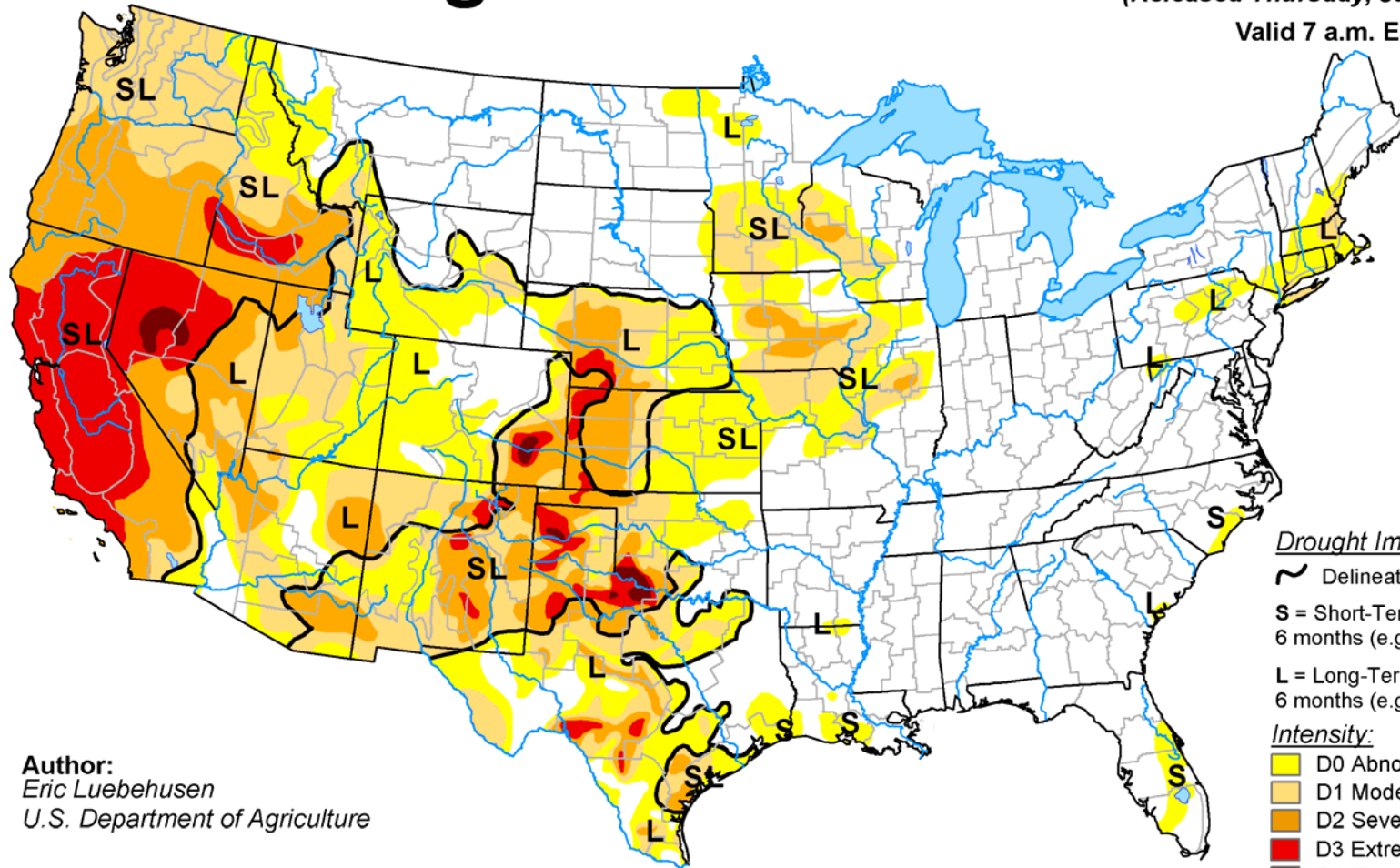


U.S. Drought Monitor

January 14, 2014
 (Released Thursday, Jan. 16, 2014)

Valid 7 a.m. EST



Drought Impact Types:

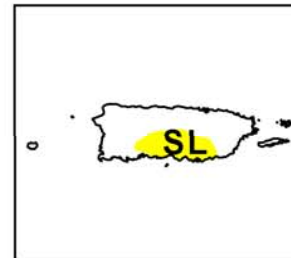
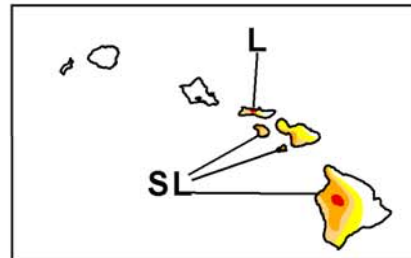
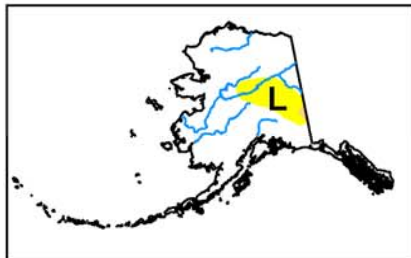
- Delineates dominant impacts
- S** = Short-Term, typically less than 6 months (e.g. agriculture, grasslands)
- L** = Long-Term, typically greater than 6 months (e.g. hydrology, ecology)

Intensity:

- D0 Abnormally Dry
- D1 Moderate Drought
- D2 Severe Drought
- D3 Extreme Drought
- D4 Exceptional Drought

The Drought Monitor focuses on broad-scale conditions. Local conditions may vary. See accompanying text summary for forecast statements.

Author:
 Eric Luebehusen
 U.S. Department of Agriculture

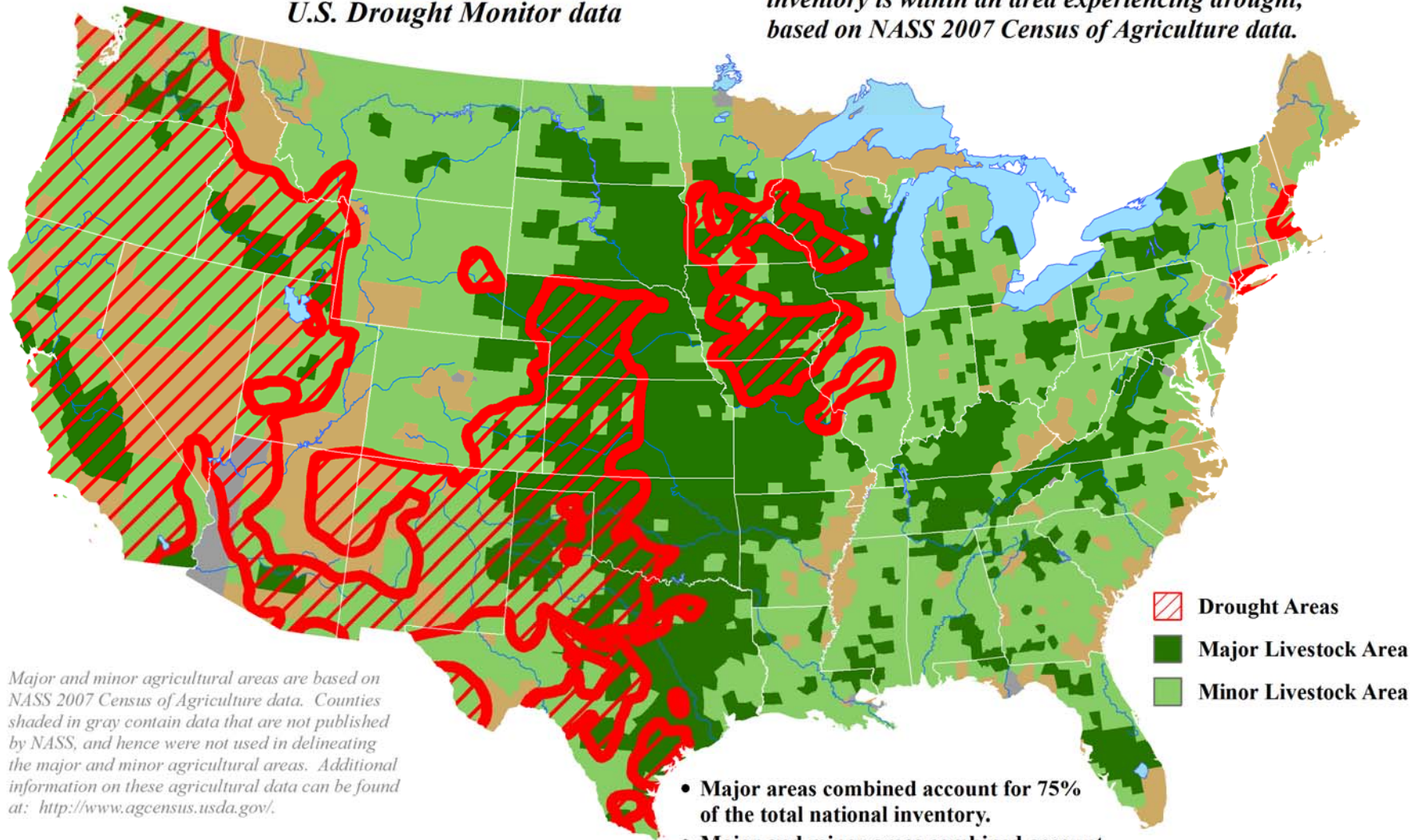


<http://droughtmonitor.unl.edu/>

U.S. Cattle Areas Experiencing Drought

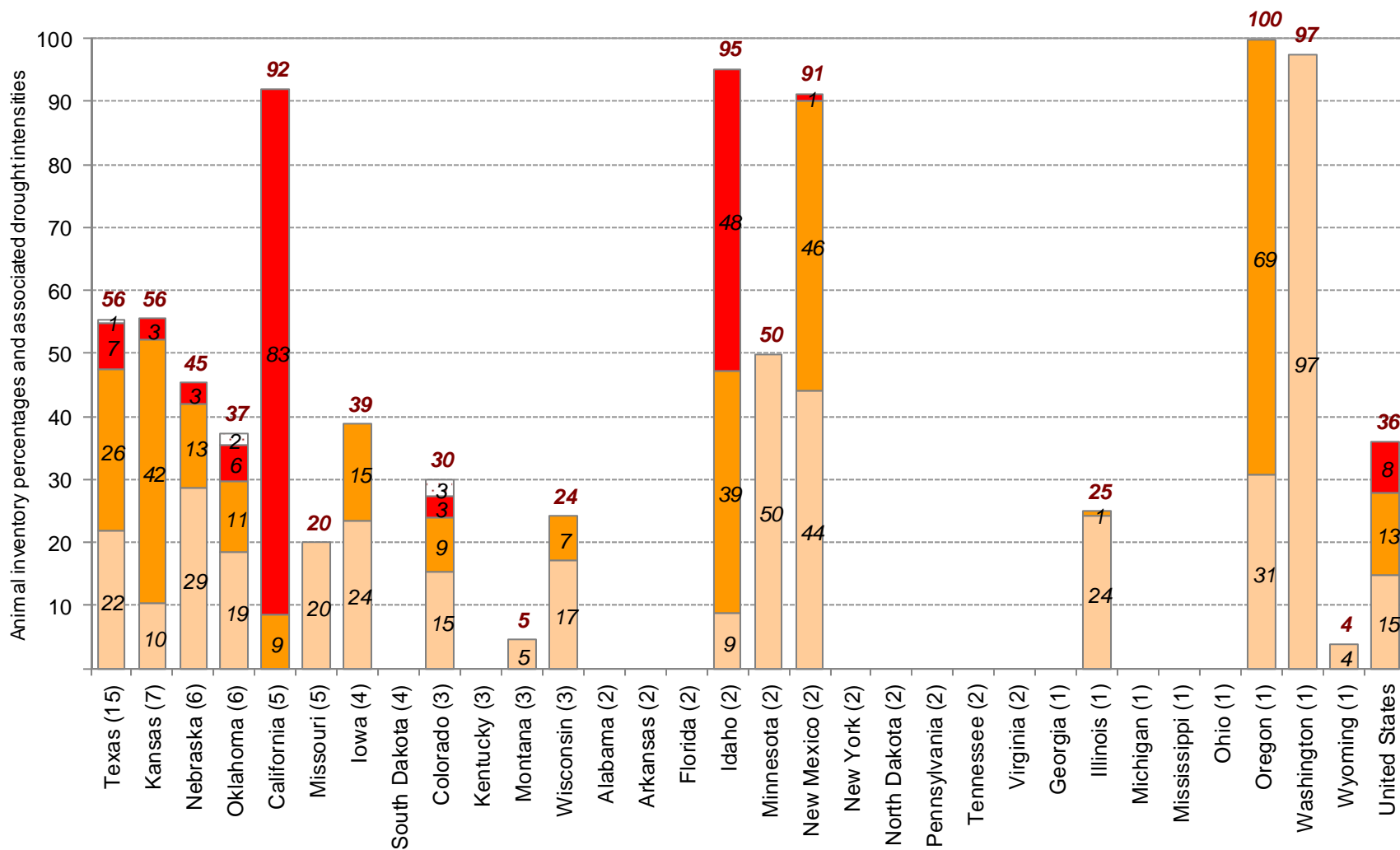
Reflects January 14, 2014
U.S. Drought Monitor data

Approximately 36% of the domestic cattle
inventory is within an area experiencing drought,
based on NASS 2007 Census of Agriculture data.



Approximate Percentage of Cattle Located in Drought *

January 14, 2014

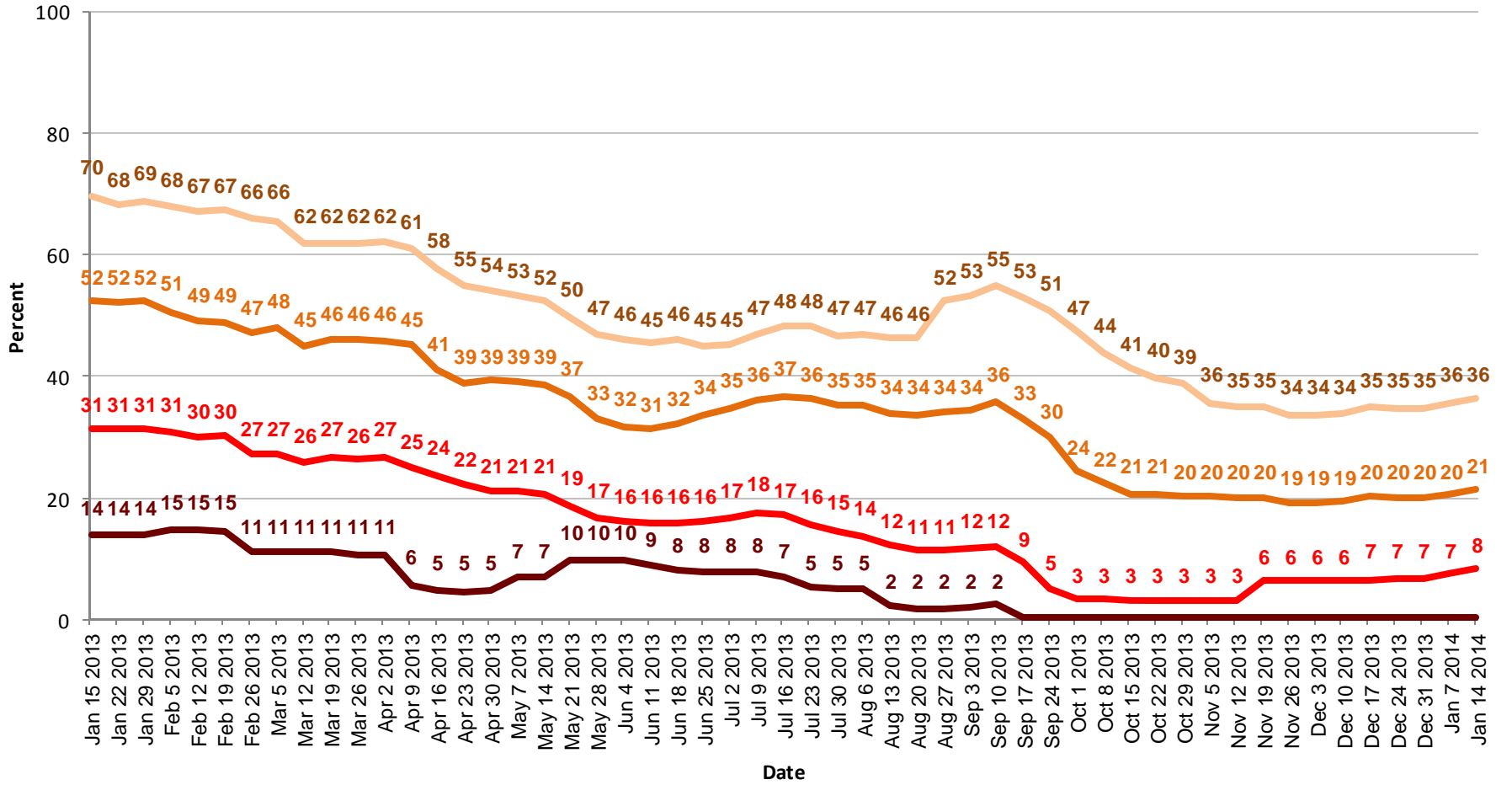


* Drought percentages were calculated from U.S. Drought Monitor (USDM) data for the above date. More information on the USDM is available at <http://droughtmonitor.unl.edu/>.



State contributions to the total national inventory (percentages in parentheses) are based upon National Agricultural Statistics Service (NASS) 2007 Census of Agriculture data. More information on NASS data can be found at <http://www.nass.usda.gov/>.

United States Cattle Areas Located in Drought

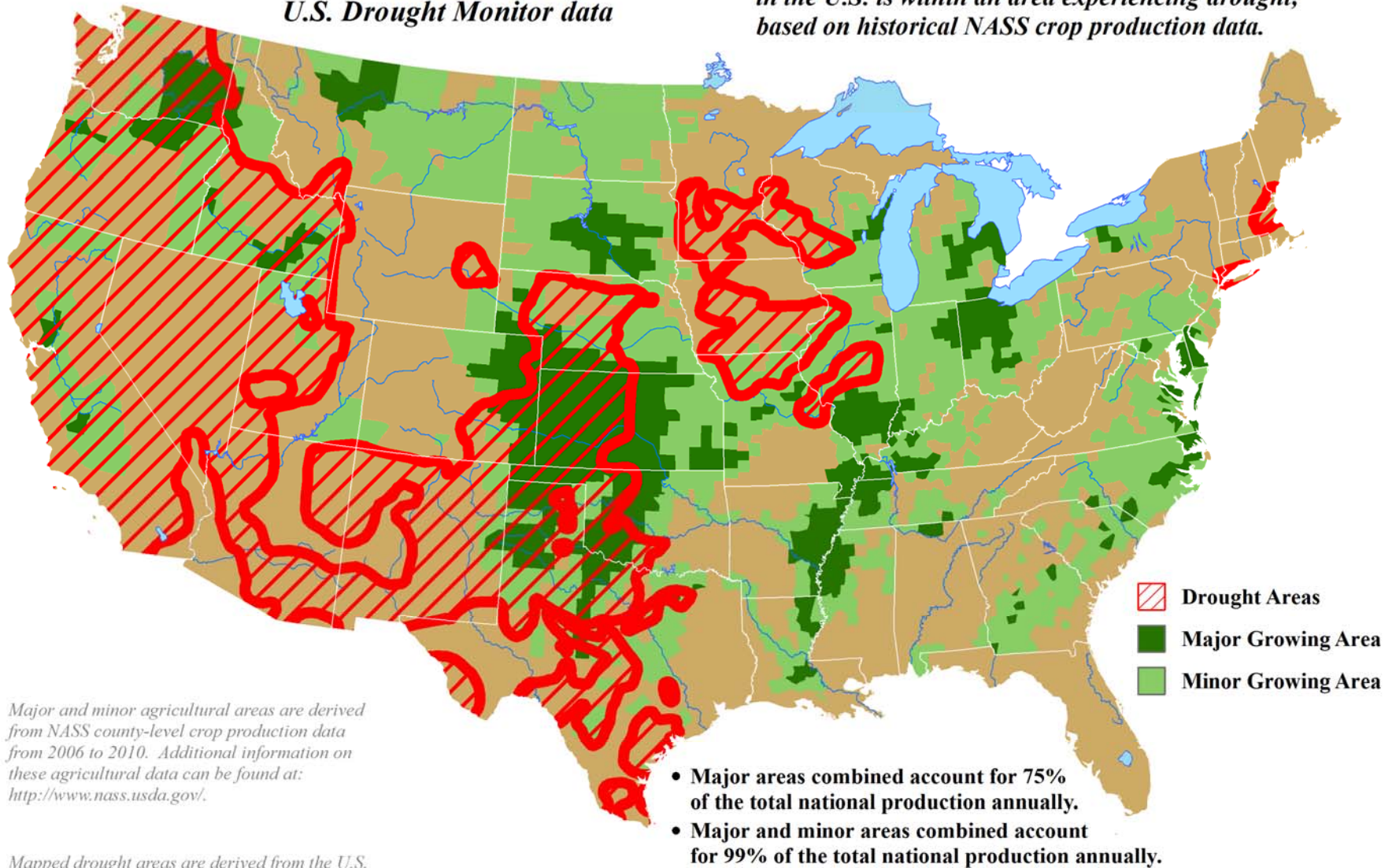


- Moderate or more intense drought (D1+)
- Severe or more intense drought (D2+)
- Extreme or more intense drought (D3+)
- Exceptional drought (D4)

U.S. Winter Wheat Areas Experiencing Drought

Reflects January 14, 2014
U.S. Drought Monitor data

Approximately **41%** of the winter wheat grown
in the U.S. is within an area experiencing drought,
based on historical NASS crop production data.

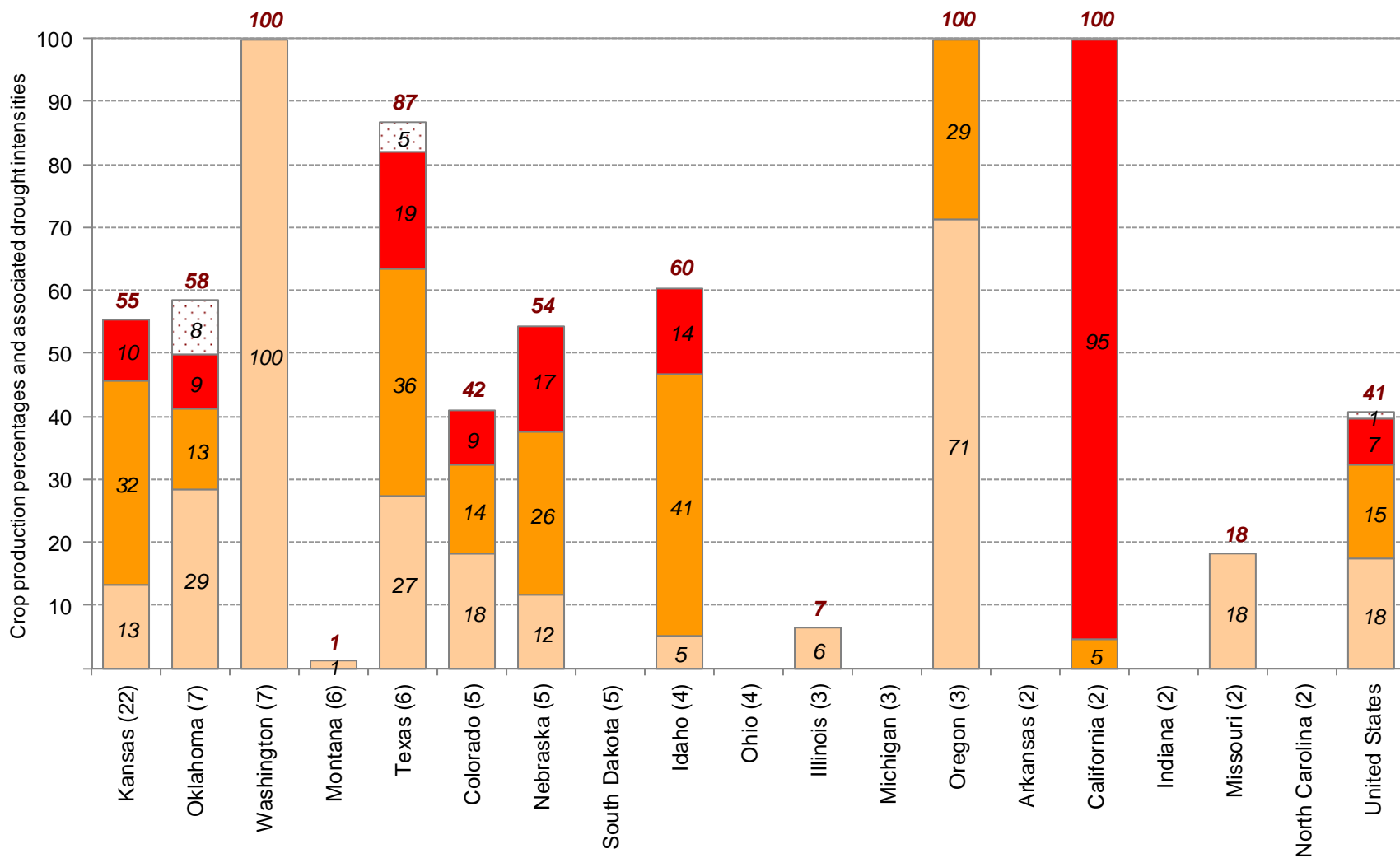


Major and minor agricultural areas are derived from NASS county-level crop production data from 2006 to 2010. Additional information on these agricultural data can be found at: <http://www.nass.usda.gov/>.

Mapped drought areas are derived from the U.S. Drought Monitor product and do not depict the intensity of drought in any particular location. More information on the Drought Monitor can be found at: <http://droughtmonitor.unl.edu/>.

Approximate Percentage of Winter Wheat Located in Drought *

January 14, 2014



* Drought percentages were calculated from U.S. Drought Monitor (USDM) data for the above date. More information on the USDM is available at <http://droughtmonitor.unl.edu/>.



State contributions to national production (percentages in parentheses) are based upon National Agricultural Statistics Service (NASS) 5-year averages from 2006-2010. More information on NASS data can be found at <http://www.nass.usda.gov/>.

United States Winter Wheat Areas Located in Drought

